

## SPECIFICATION GUIDE

### TOP HUNG ROOM DIVIDER

INTERIOR SLIDING GLASS DOOR SYSTEM

#### PART 1 - PRODUCT

##### 1.1 MANUFACTURER

###### A. **COXUSA**

4755 E. Zinfandel Court, Suite D  
Ontario, California 91761  
909.545.8900  
info@dividersusa.us  
www.dividersusa.us

##### 1.2 COMPONENTS

###### A. **Framing, General**

1. Material. Aluminum extrusions, 6063-T5 alloy
2. Finish
  - a. Anodized Aluminum. [**Satin Aluminum**]
  - b. Wet Paint. [**Black**] [**White**] [**Java**]

###### B. **Top Tracks**

1. Material. 17-gauge aluminum, 6063-T5 alloy  
Height. 1-1/4"  
Width. 1-3/4"  
Maximum length. 156"
2. Installation
  - a. [**Mounted under a Header**]
  - b. [**Mounted to a Ceiling**]
  - c. [**Mounted using the DIVIDERS Aluminum Beam System**]

3. Channel. [**Single**] [**Double**] [**Triple**]
4. Panel. [**Single**] [**Double**] [**Triple**]
5. Finish.
  - a. Anodized Aluminum. [**Satin Aluminum**]
  - b. Wet Paint. [**Black**] [**White**] [**Java**]

#### C. **Bottom Tracks**

1. **No floor tracks required.**

#### D. **Doors**

1. Stiles and Rails
  - a. **Vertical stiles**  
 Material. 17-gauge aluminum, 6063-T5 alloy  
 Height. 1-1/2"  
 Width. 1-5/16"  
 Maximum length. 193"
  - b. **Horizontal rails (Top and Bottom)**  
 Material. 17-gauge aluminum, 6063-T5 alloy  
 Height. 1-5/8"  
 Width: 1-5/16"  
 Maximum length. [**143" Top Rail**] [**156" Bottom Rail**]
  - c. **Maximum panel weight.** 180 lbs
2. **Fascia**  
 Material. 17-gauge aluminum, 6063-T5 alloy  
 Height. 2-3/4"  
 Maximum length. 156"
3. **Mullions**
  - a. H-Bar. Glazed-in aluminum bars [**1.5 inch**] sight line
  - b. Plant-On Strips. [**1 inch**] sight line
    1. [**Single-Sided**] décor strips with adhesive backing
    2. [**Double-Sided**] décor strips with adhesive backing

#### 4. **Spacer Block**

Material. Delrin DS100 NC000, injection molded part

Color. Black

Dimensions. 1-1/2" x 1-5/8", 1/4" thick

#### 5. **End Cap Assembly**

Material. 17-gauge aluminum, 6063-T5 alloy

Dimensions. [2-3/16" x 2-3/4"] [2-1/2" x 2-3/4"]

[2-11/16" x 2-3/4"]

Thickness. 1/4"

### E. **Aluminum Beam System**

1. Horizontal Beam System. [2" x 4"] [2" x 6"] [4" x 4"] [4" x 6"]

2. Vertical Beam System: [2" x 4"] [4" x 4"] [4" x 6"] [6" x 6"]

1. Finish

a. Anodized Aluminum. [Satin Aluminum]

b. Wet Paint. [Black] [White] [Java]

4. Gauge. [14 for [2" x 4"] [4" x 4"]]

[11 for [2" x 6"] [4" x 6"] [6" x 6"]]

### F. **Glass**

1. Monolithic Glass. 3mm thick with safety film backing

a. Back-Painting. [White] [Black]

2. Laminated Glass

a. [White] laminated glass, 6mm thick with opaque interlayer

3. Mirror. Mirror with safety film backing

4. Monolithic Tempered Glass. [3mm - 6mm]

a. Any tempered glass with glazing patterns

[Acid-etched] [Frosted]

## 1.3 **HARDWARE**

### A. **Taped-On Handle**

Material. 17-gauge aluminum, 6063-T5 alloy

Dimensions. 1" x 3"

A. Handles and Pulls

1. **Recessed Pocket Door Edge Pull (H-485)**

Material. Polycarbonate housing with Zinc AG40A lever pull.

Dimensions. 1/2" x 2 5/16" [Pull], 3/4" x 2 5/8 [Housing]

2. **Recessed Stile Pull (H-514)**

Material. Polycarbonate

Dimensions. 7/8" x 2-5/8" [Depth of pull: 5/8]

3. **Sliding Passage Door Pull (H-588)**

Material. 6063-T5 aluminum

Dimensions. [See attached technical drawing]

4. **ADA Handle (H-625)**

Material: 6063-T5 aluminum

Dimensions. [See attached technical drawing]

B. Top Roller Assembly

Each top roller system consists of 2 top rollers with 4 nylon wheels with ball bearing axles. Roller assembly features an anti-jump design that provides a 3/4" vertical adjustability.

C. Floor Mounted Guide

Material. Stamped metal roller assembly using 15-gauge zinc plated steel with [**two roller bearings**] [**4 roller bearings**] over-molded with rubber

Installation. Attached to the [**floor**] [**wall**] [**aluminum stile**]

Application. [**1 panel system**] [**2 panel system**] [**3 panel system**] [**4 panel system**] [**5 panel system**] [**6 panel system**]

D. Track Stop

## 1.2 FABRICATION AND ASSEMBLY

A. Door Design

1. 2-Lite. Divided horizontally into 2 lights
2. 3-Lite. Divided horizontally into 3 lights
3. 4 Lite. Divided horizontally into 4 lights
4. 5 Lite. Divided horizontally into 5 lights

B. Shop Assembly

Fabricate frame components and doors to finished sizes in shop except provide field splicing at locations indicated in shop drawings to accommodate handling and access limitations.

**1.3 ACCESSORIES**

- a. Bumper /Screw Head Cover
- b. Glazing Vinyl

**PART 2 - EXECUTION**

**2.1 EXAMINATION**

Verify that openings and substrates are acceptable for installation of work in this section.

**2.2 INSTALLATION**

Install systems according to shop drawings and manufacturer's installation instructions.

**2.3 ADJUSTING, CLEANING AND PROTECTION**

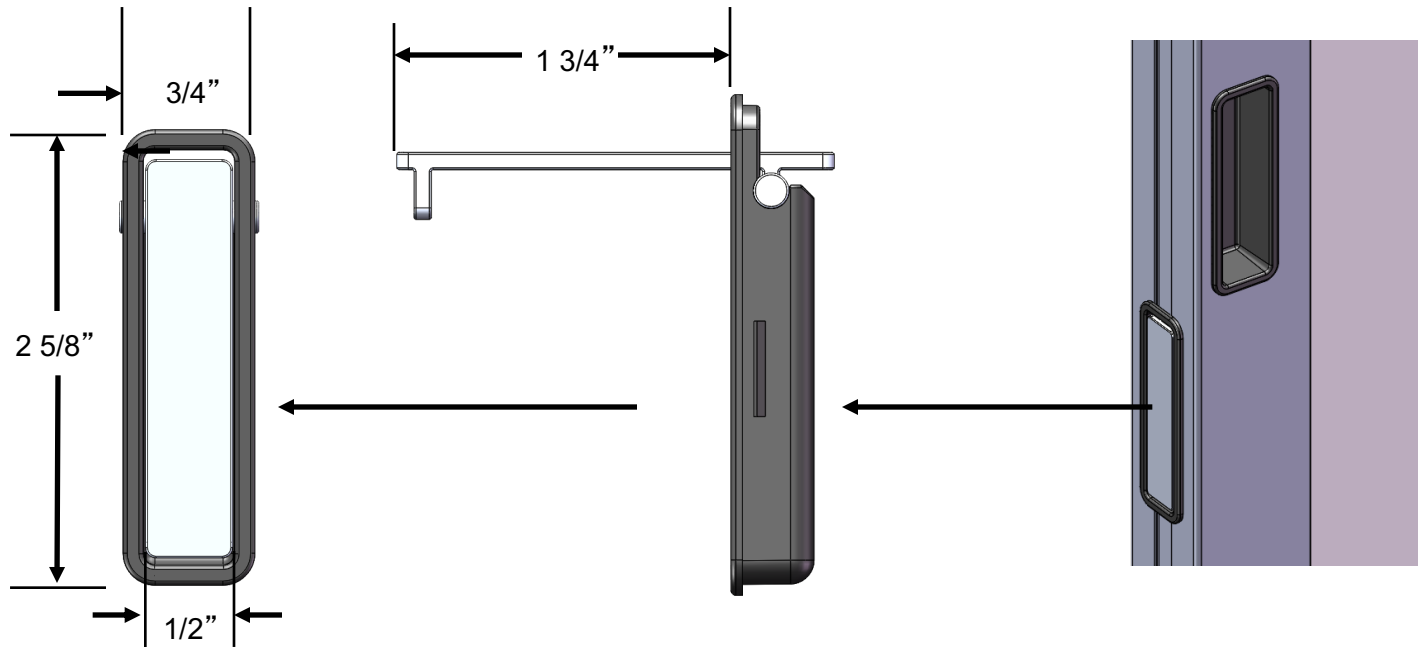
- a. Adjust doors for smooth operation.
- b. Comply with manufacturer's written recommendations for cleaning and maintenance.
- c. Protect surfaces from impact and from contact with contaminating substances resulting from other construction operations.
- d. Clean immediately before substantial completion.

**2.4 CLOSEOUT REQUIREMENTS**

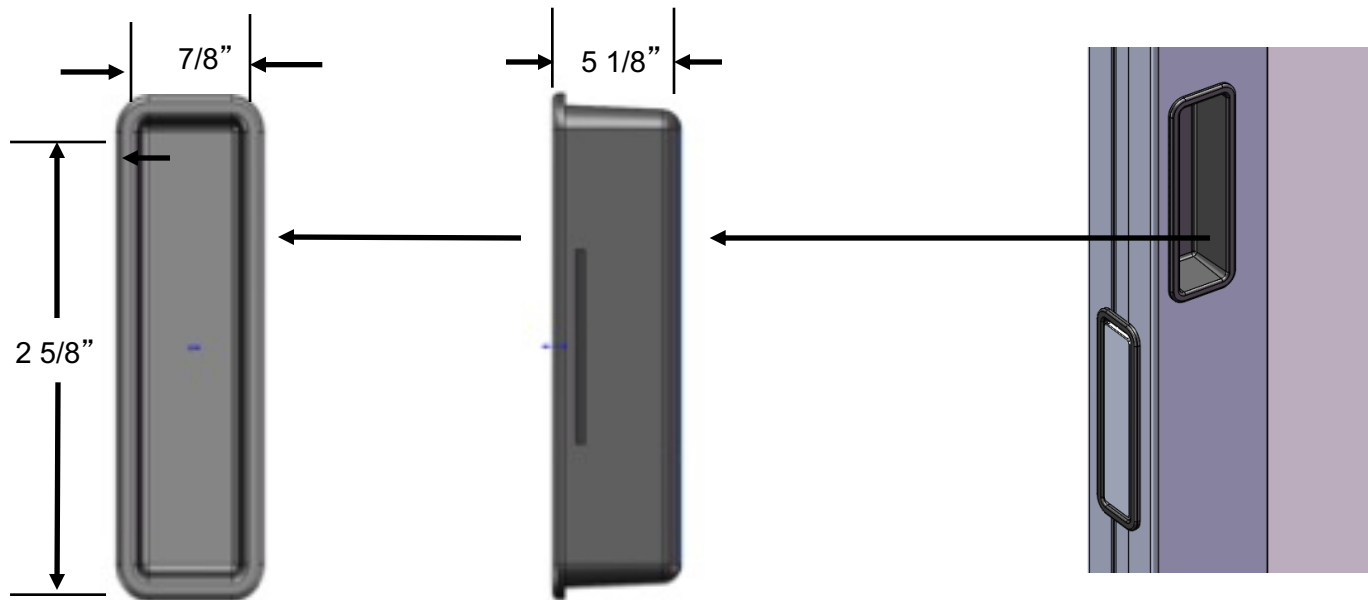
Deliver executed Warranty.

END OF SECTION

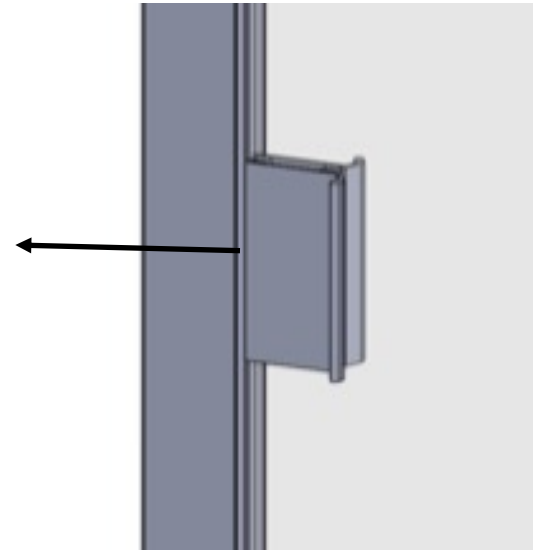
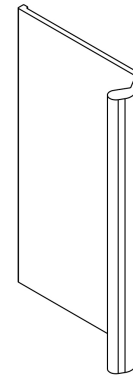
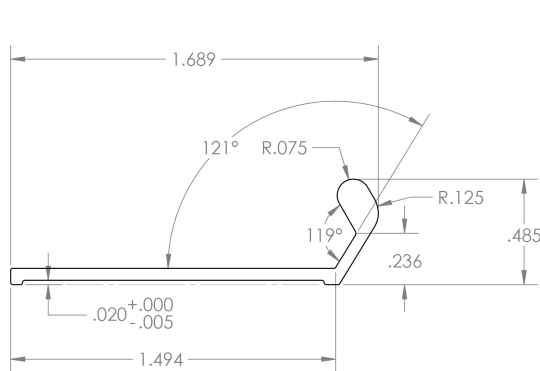
TECHNICAL DRAWING  
Recessed Pocket Door Edge Pull (H-485)



TECHNICAL DRAWING  
Recessed Stile Pull (H-514)



## TECHNICAL DRAWING Sliding Passage Door Pull (H-588)





## TECHNICAL DRAWING ADA Handle (H-625)

